

## SSFA comparison

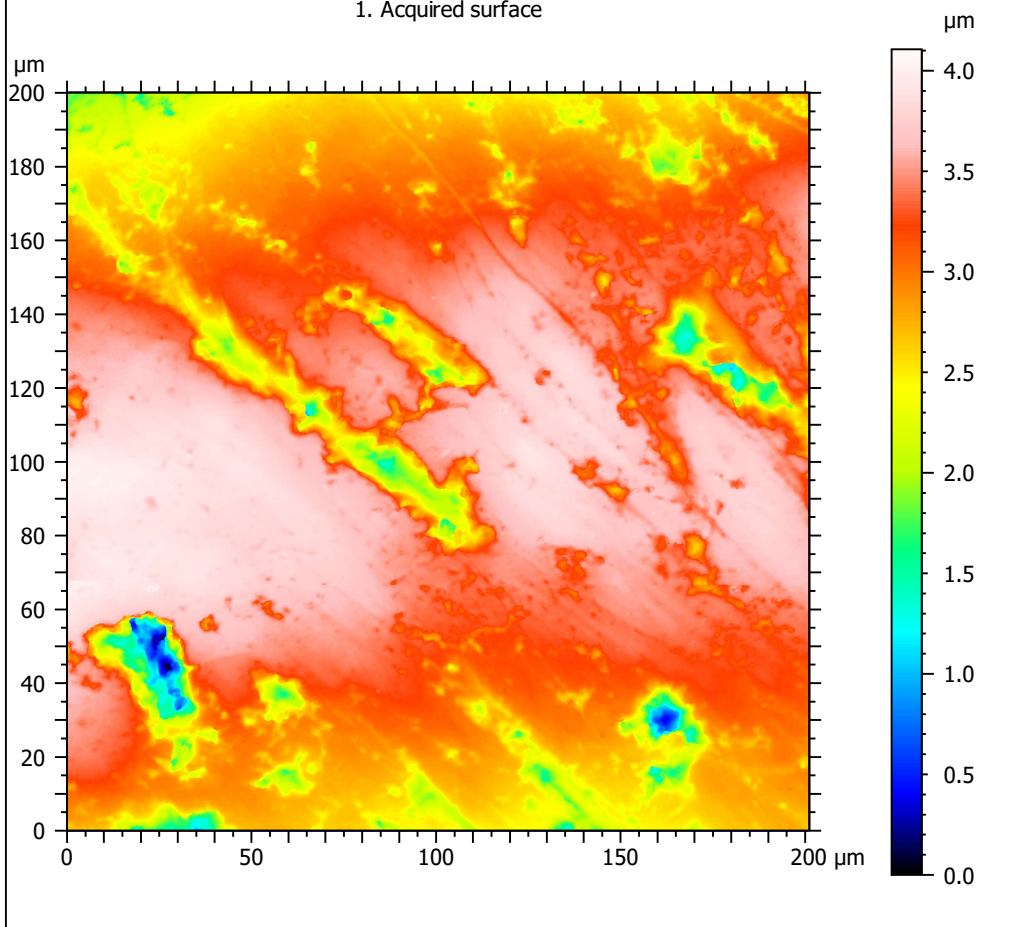
Template to process all surfaces acquired with the Leica DCM8 with the 100x/0.90 objective.

### A. Processing

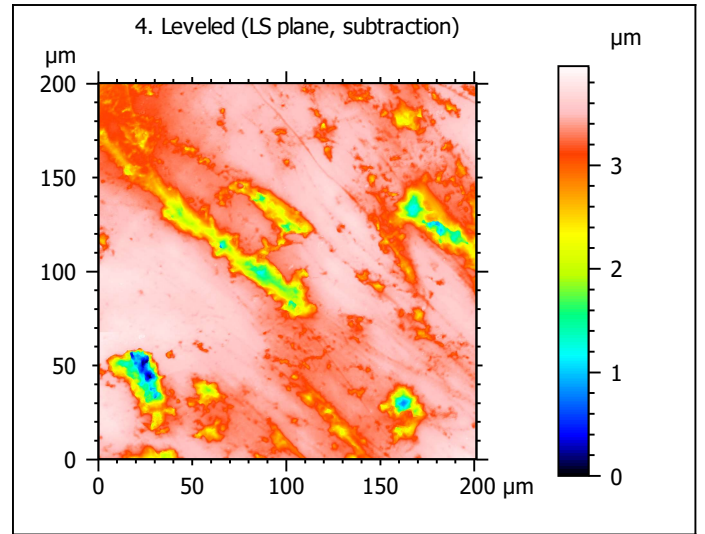
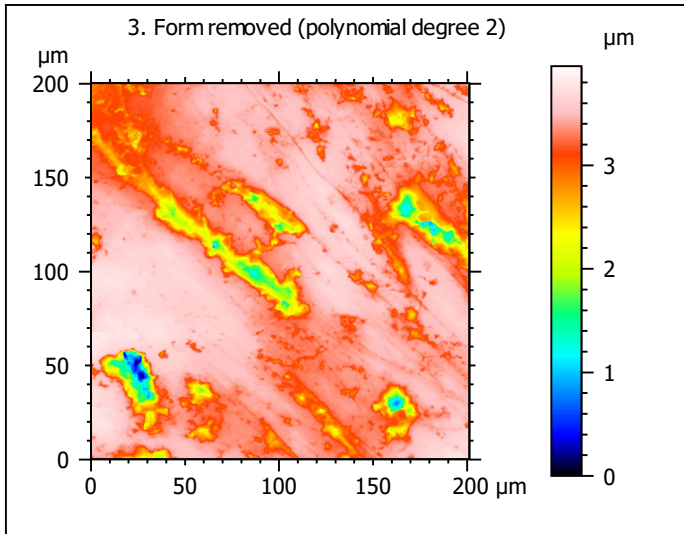
#### Identity card

Name:	L6-Ovis-90074-lm2sin-a		
File path:	D:\Data\3Ddata\SSFA\Sheeps\Original surfaces\L6-Ovis-90074-lm2sin-a.sur		
Studiable type:	Surface		
Axis:	X		
Length:	201.1	μm	
Size:	1561	points	
Spacing:	0.1289	μm	
Axis:	Y		
Length:	200.1	μm	
Size:	1551	points	
Spacing:	0.1291	μm	
Axis:	Z		
Length:	4.107	μm	
Size:	41070998	digits	
Spacing:	1e-07	μm	
NM-points ratio:	0.000 % (0 Pts)		

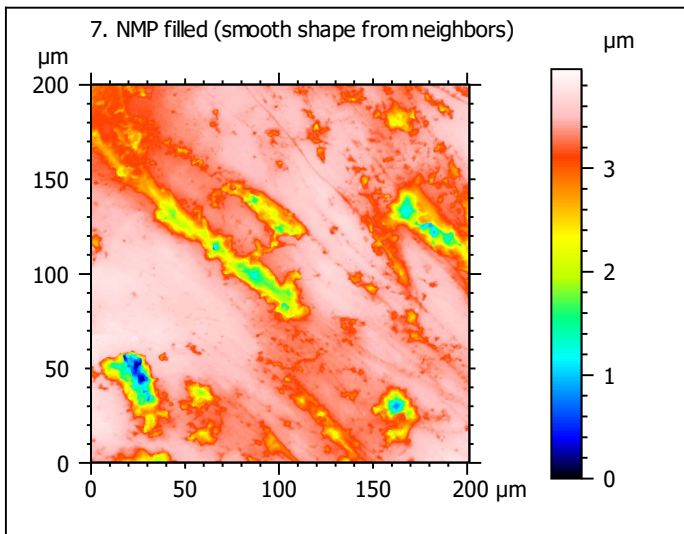
1. Acquired surface



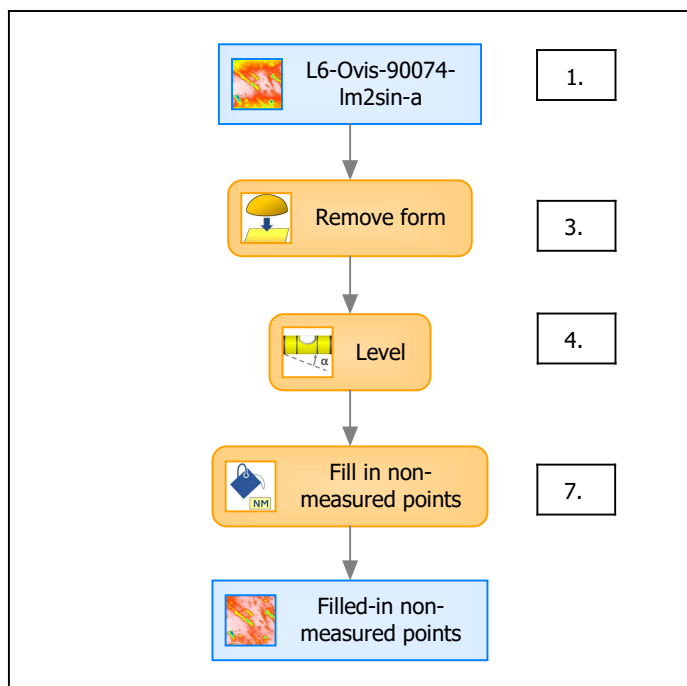
*Note that the surfaces have been preprocessed (mirrored in z, cut to 200x200 μm and automatically cleaned) according to Merceron et al. (2016), Proc. R. Soc. B 283: 20161032.*



Identity card	
Name:	L6-Ovis-90074-Im2sin... > Leveled (LS-plane)
Axis:	Z
NM-points ratio:	0.000 % (0 Pts)



## B. Summary



### Identity card

Name: L6-Ovis-90074-lm2sin-a > Form removed (LS-poly 2) > Leveled (LS-plane) > Filled-in non-measured points

Studiabile type: Surface

#### Axis: X

Length: 201.1  $\mu\text{m}$   
Size: 1561 points  
Spacing: 0.1289  $\mu\text{m}$

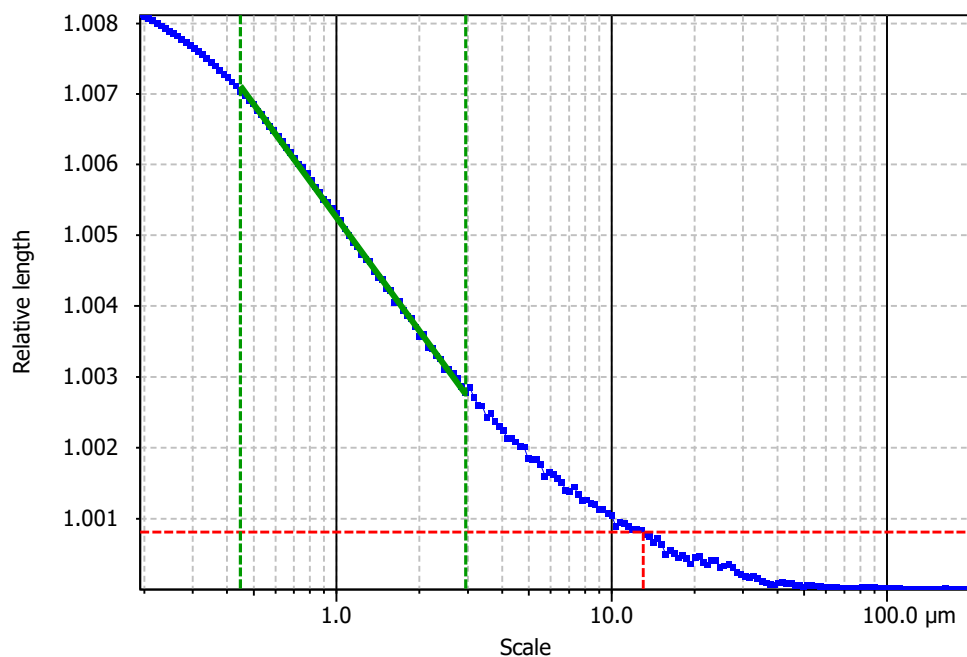
#### Axis: Y

Length: 200.1  $\mu\text{m}$   
Size: 1551 points  
Spacing: 0.1291  $\mu\text{m}$

#### Axis: Z

Layer type: Topography

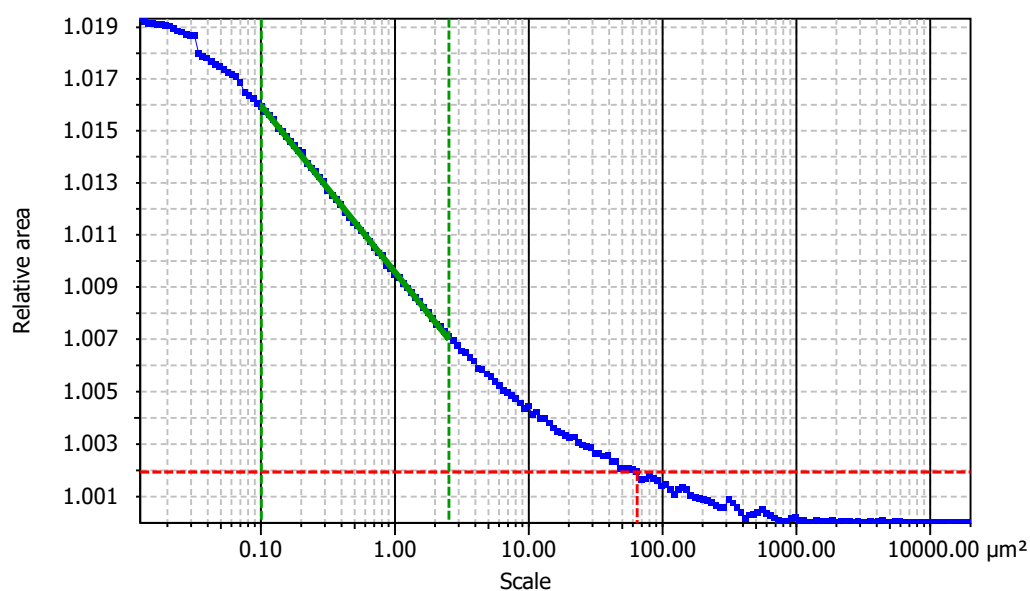
Length: 3.958  $\mu\text{m}$   
Size: 39576266 digits  
Spacing: 1e-07  $\mu\text{m}$

**Information**

Method	Length-scale (rows)
--------	---------------------

**Parameters**

Parameters	Value	Unit	Comment
epLsar	0.001315		Length-scale anisotropy (Sfrax) (1.8 μm, 5°)
NewEplsar	0.01802		Length-scale anisotropy (1.8 μm, 5°)

**Information**

Method	Area-scale (four corners)
--------	---------------------------

**Parameters**

Parameters	Value	Unit	Comment
R <sup>2</sup>	0.9993		Reg. coefficient R <sup>2</sup>
Asfc	2.746		Fractal complexity
Smfc	0.3651	μm <sup>2</sup>	Scale of max complexity
HAsfc9	0.5276		Heterogeneity of Asfc (3x3)
HAsfc81	1.040		Heterogeneity of Asfc (9x9)